

4K Medical Video Image Processing



IPS4000 - Control OR 4K

Ultra high definition modular video matrix switcher and converter.

The next generation of medical image processing and control is here with IPS4000. FSN Medical Technologies has developed a powerful, yet compact, digital video integration solution that offers compatibility for today and beyond.

Key Features

- Up to 4096 x 2160 maximum resolution
- Input video formats: DisplayPort, HDMI, 12G-SDI, analog
- Output video formats: DisplayPort, HDMI
- Output layout options: single, dual (9 types), quad (9 types)
- Save and recall up to 10 user preset configurations
- 4 channel concurrent network streaming
- Image control: contrast, brightness, color, zoom, pan
- Built-in 7 inch diagonal touch screen
- Options for interface control via touchscreen or tablet

Controls

- Change output window layout
- Route a source to window of a destination
- Route a window to a source of a destination
- Change input icons, input color setting, input name
- Change output icons, output resolution setting, output name
- Change zoom/pan setup
- Save and recall a preset configuration
- Input and output parameters
- View settings for system, network, streaming, and firmware

HDMI 2.0 **DisplayPort 1.2** **12G SDI** **Analog**

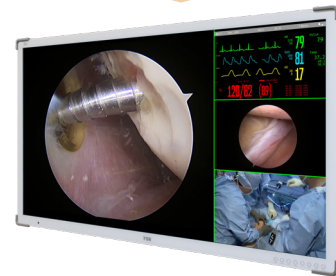
Input

Up to 4096 x 2160 resolution.
Save and recall custom user presets.



Output

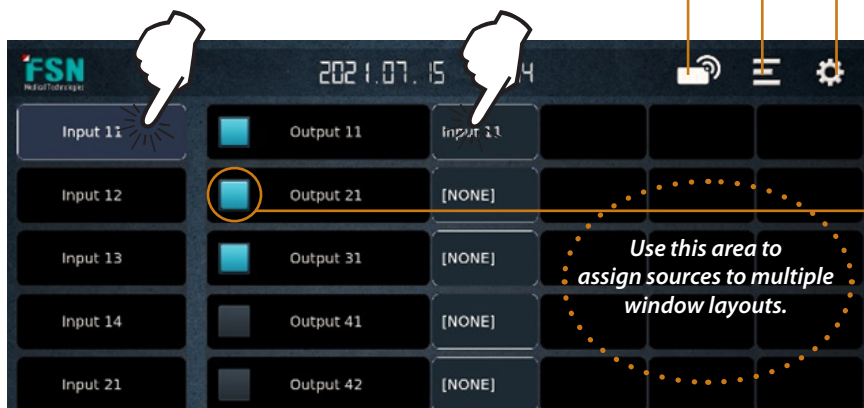
Single, dual, quad window layouts.
Concurrent 4 channel network streaming.
Control contrast, brightness, color, zoom, pan.



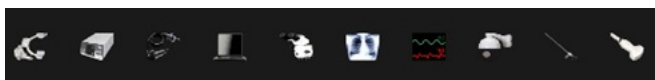
1. Touch a video source to select.

2. Touch a destination to route.

System Control Options
Streaming Presets Setup

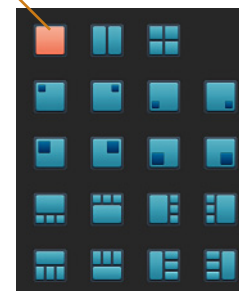


Add custom icons to sources or destinations.



Choose from a list of window layouts, including:

- PIP • PBP
- Quad • 1 large 3 small.



User Interface

In addition to the built-in 7 inch diagonal touch screen.



External touchscreen



Tablet



Custom GUI

fsnmed.com

Foreeseon Custom Displays, Inc.
2210 E. Winston Road
Anaheim, CA 92806 USA
Tel: 714-300-0540
Fax: 714-300-0546

Latin America
Aventura, FL 33180 USA
Tel: 714-507-3855

Foreeseon Korea
B-408, U-Space2
670 Daewangpangyo-ro,
Bundang-gu, Seongnam-si
Gyeonggi-do, Republic of Korea
Tel: +82-31-8017-0780

Foreeseon GmbH
Industriestrasse 38a
63150 Heusenstamm, Germany
Tel: +49 6104 64398 0
Fax: +49 6104 64398 11

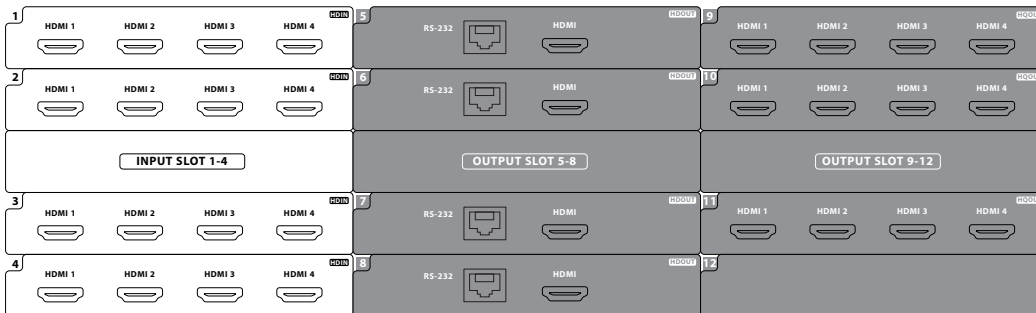
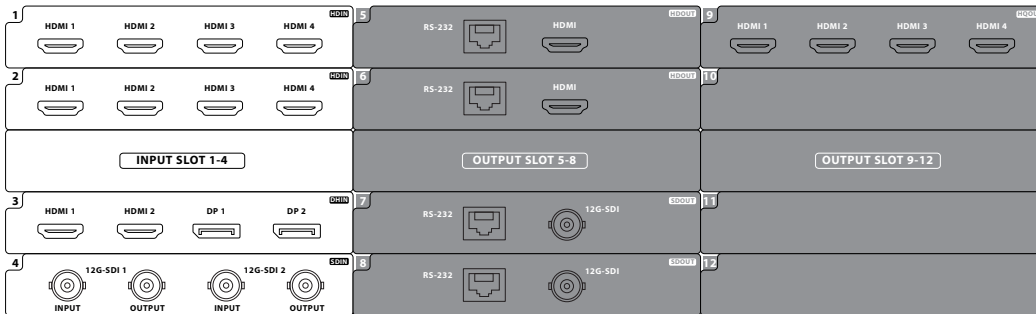
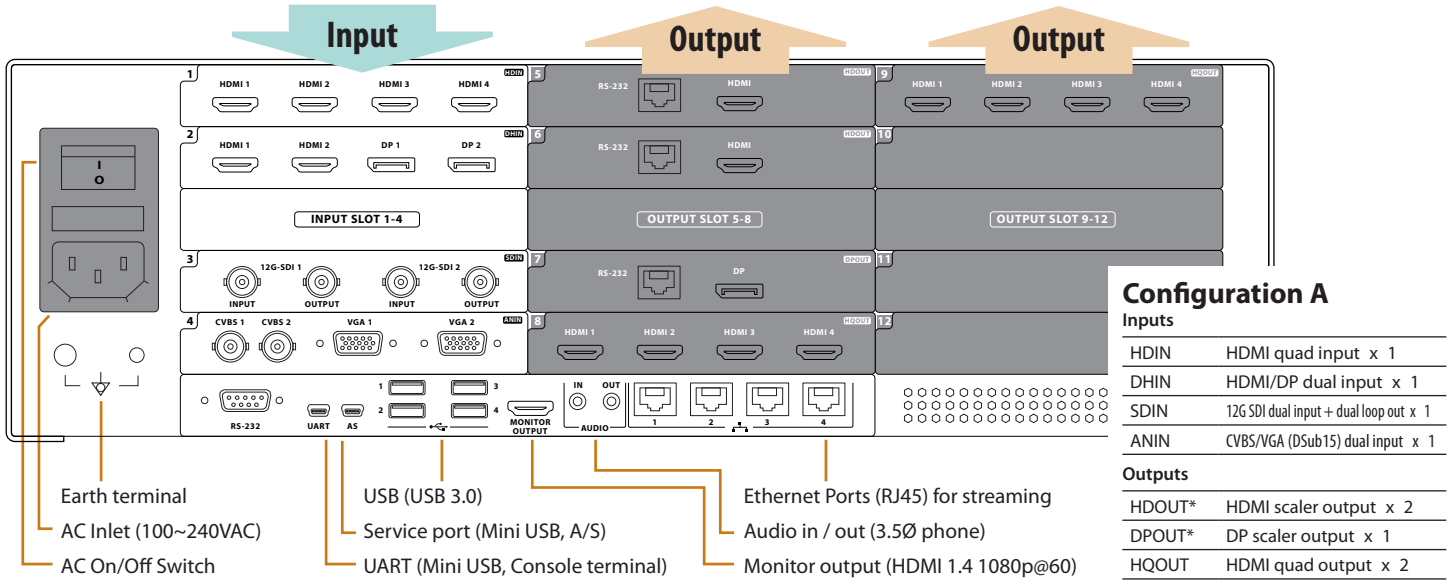
Foreeseon UK Ltd.
1 Wolsey Road
East Molesey
Surrey
KT8 9EL
United Kingdom
Tel: +44 (0) 208 546 1047

Foreeseon (Shanghai)
Medical Equipment Co., Ltd.
Room 1010, Building A
1439 Wuzhong Road
Rhein Hongjing Center
Minhang District, Shanghai, China
Tel: 18521095596

4K Medical Video Image Processing

IPS4000 - Control OR 4K

Ultra high definition modular video matrix switcher and converter.



* Scaled output. Adjustments available for resolution, window layout, zoom, pan functions. Example: 4 scaled output signals can be displayed on a single monitor.

General Features

Item	Description
Network	Ethernet TCP/IP
On Screen Display	English. Built-in 7 inch diagonal touch screen, or external screen via web, tablet or PC.
Power	AC 100~240V / 50~60Hz, 2A-1A
Unit Dimension	437(W) x 140(H) x 423(D) mm 17.21(W) x 5.51(H) x 16.65(D) inch

Item	Description
Package Dimension	520 (W) x 237 (H) x 592 (D) 20.47 (W) x 9.33 (H) x 23.31 (D)
Weight	10.7 kg, 23.59 lbs. (IPS4000) 14 kg, 30.86 lbs. (shipping package)
Compliance & Certifications	ANSI/AAMI ES60601-1, CAN/CSA-C22.2 NO.60601-1:14, IEC/EN60601-1, FCC Part 15 subpart B, CE(EN60601-1-2,EN55011,EN61000-3-2/3), RoHS